

LEXINGTON SCHOOL COMMITTEE MEETING
Tuesday, December 2, 2012
Twelfth Baptist Church
160 Warren Street
Roxbury, Massachusetts

6:00 p.m. Light Refreshments and Conversations

6:15 p.m. **Break-Out Sessions:**
With Individual School Principals and Staff (45 minutes)

7:00 p.m. **Call to Order and Welcome:**
Public Comment – (Written comments to be presented to the School Committee;
oral presentations not to exceed three minutes.)

7:05 p.m. **Superintendent’s Announcements:**

7:10 p.m. **School Committee Member Announcements:**

7:20 p.m. **Agenda:**

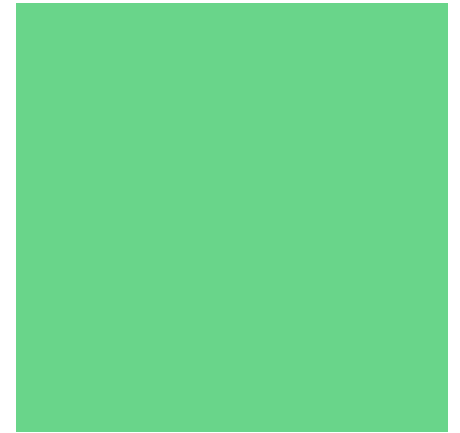
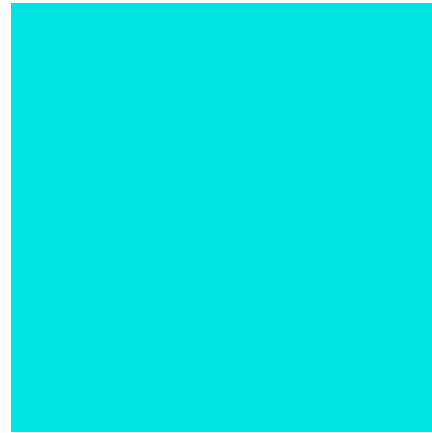
1. Superintendent’s Presentation of METCO Achievement Data (20 minutes)
2. Three Perspectives on the METCO Program – a Parent, a Teacher, and a Student (20 minutes)

8:20 p.m. **Adjourn:**

The next scheduled meetings of the School Committee are as follows:

- Tuesday, December 9, 2014 – 7:30 p.m., Town Offices Building, Selectmen’s Meeting Room, 1625 Massachusetts Avenue
- Tuesday, December 16, 2014 – 7:30 p.m., Town Offices Building, Selectmen’s Meeting Room, 1625 Massachusetts Avenue

All agenda items and the order of items are approximate and subject to change.



Longitudinal MCAS and
SAT Comparisons for
Lexington High School
and Nearby Communities
December 2, 2014

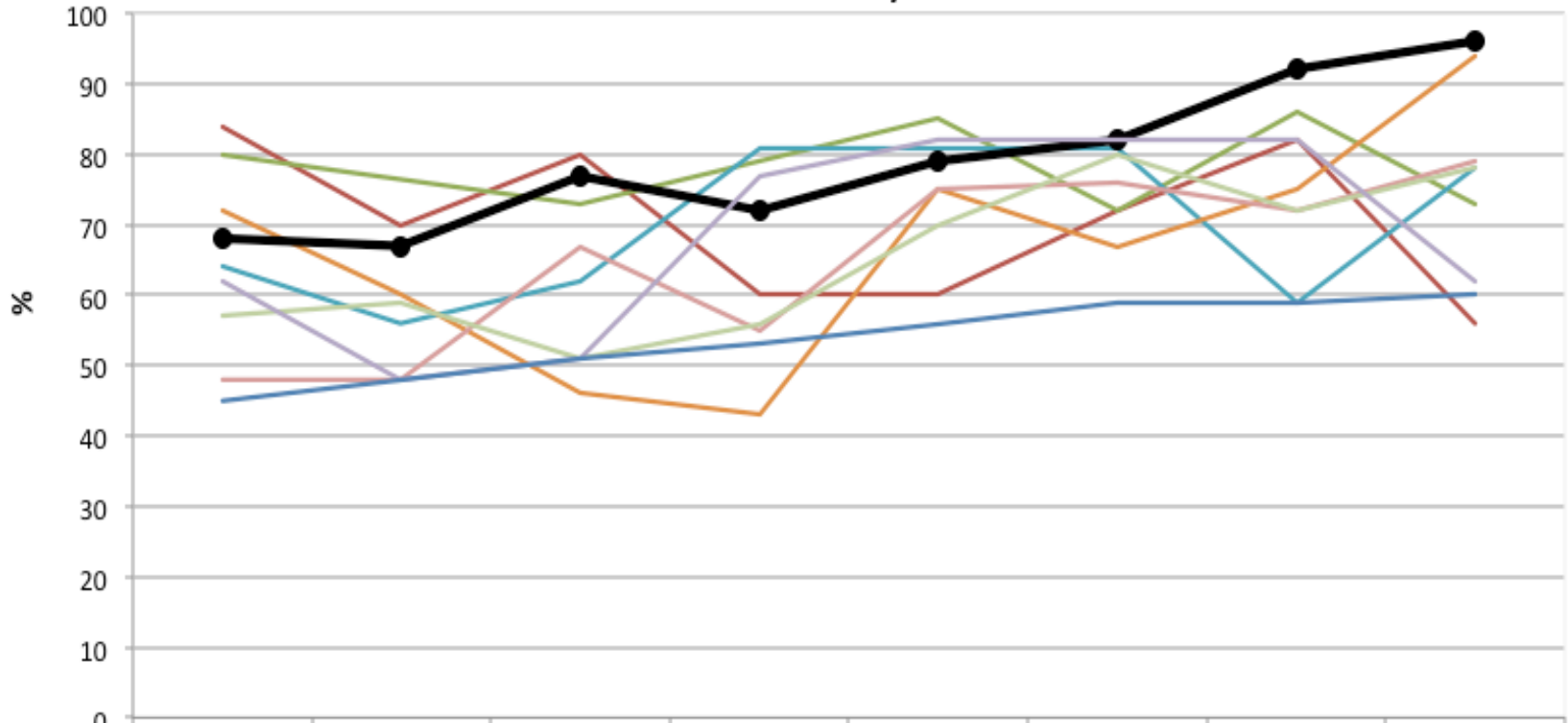


Full List of Comparable Communities

- Acton-Boxborough
- Bedford
- Belmont
- Brookline
- Concord-Carlisle
- Lincoln-Sudbury
- Newton
- Wellesley
- Weston
- Westwood
- Winchester

*** Only those communities with performance level results for 10 or more students are reported**

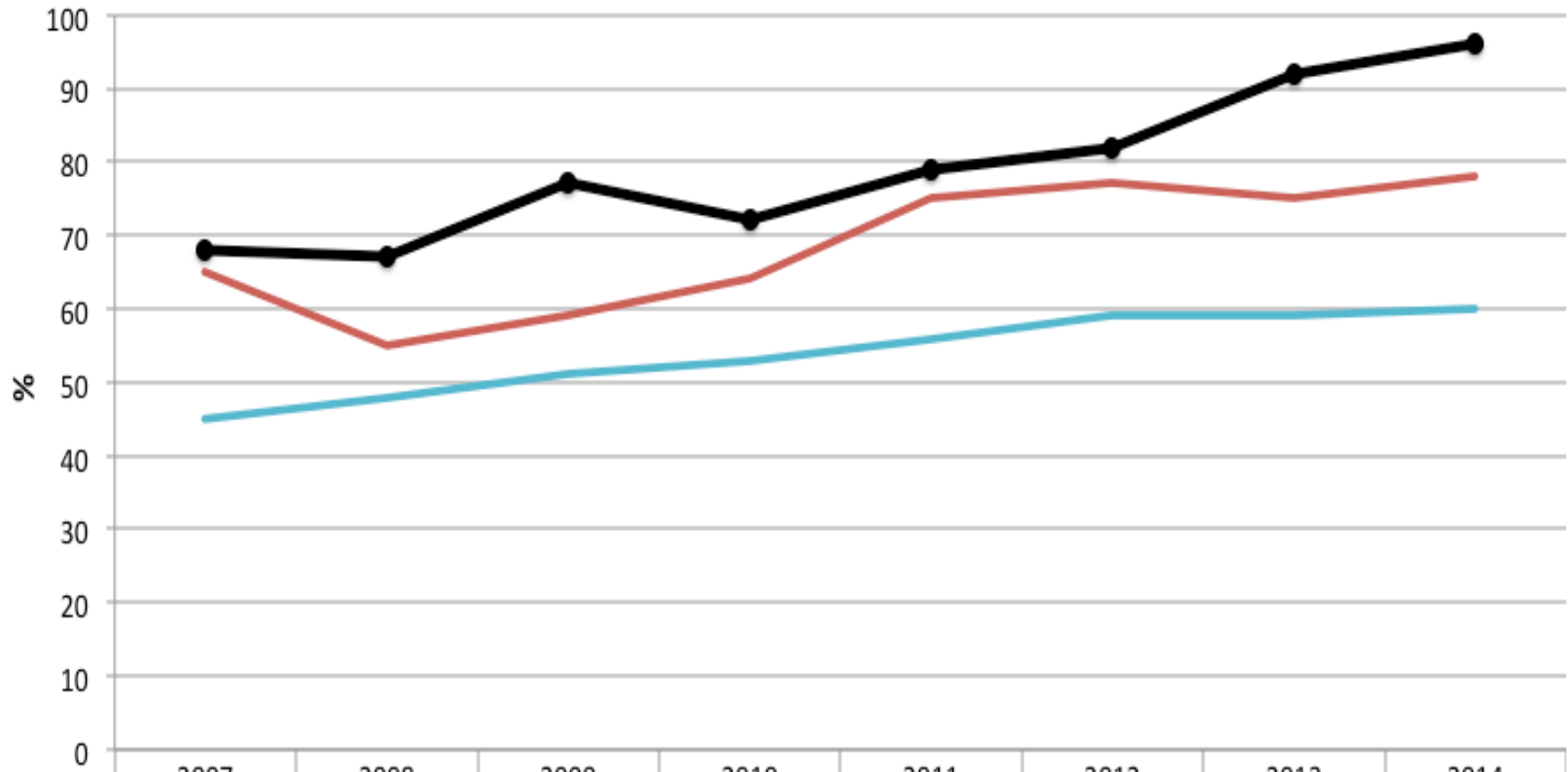
MCAS Mathematics: % Proficient & Advanced Grade 10 African American/Black



	2007	2008	2009	2010	2011	2012	2013	2014
Bedford	84	70	80	60	60	72	82	56
Belmont	80	NR	73	NR	85	72	86	73
Brookline	64	56	62	81	81	81	59	78
Concord-Carlisle	72	60	46	43	75	67	75	94
Lexington	68	67	77	72	79	82	92	96
Lincoln-Sudbury	48	48	67	55	75	76	72	79
Newton	57	59	51	56	70	80	72	78
Wellesley	62	48	51	77	82	82	82	62
State	45	48	51	53	56	59	59	60

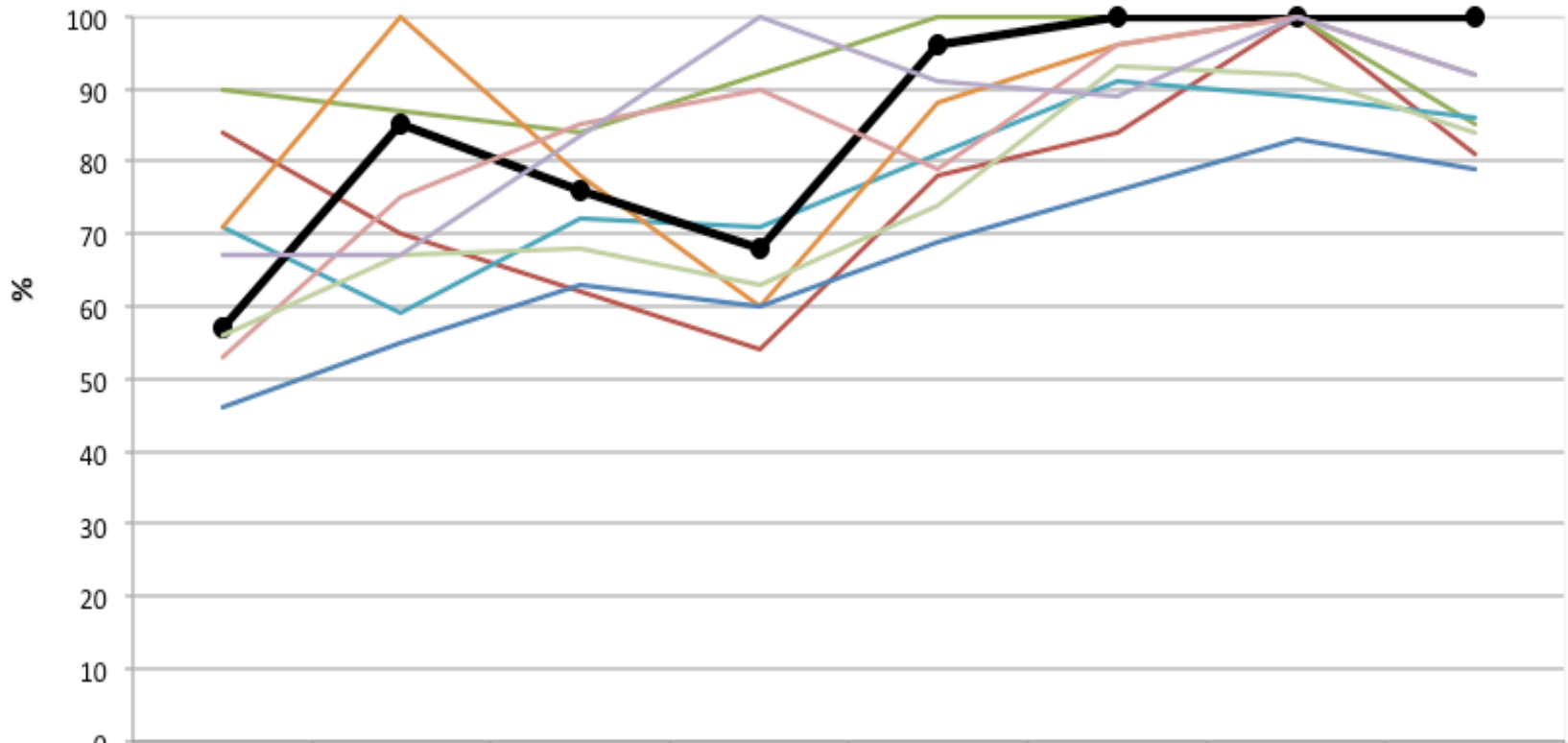
SOURCE: DESE Statewide reports

MCAS Mathematics: % Proficient & Advanced Grade 10 African American/Black



	2007	2008	2009	2010	2011	2012	2013	2014
Similar Communities	65	55	59	64	75	77	75	78
Lexington	68	67	77	72	79	82	92	96
State	45	48	51	53	56	59	59	60

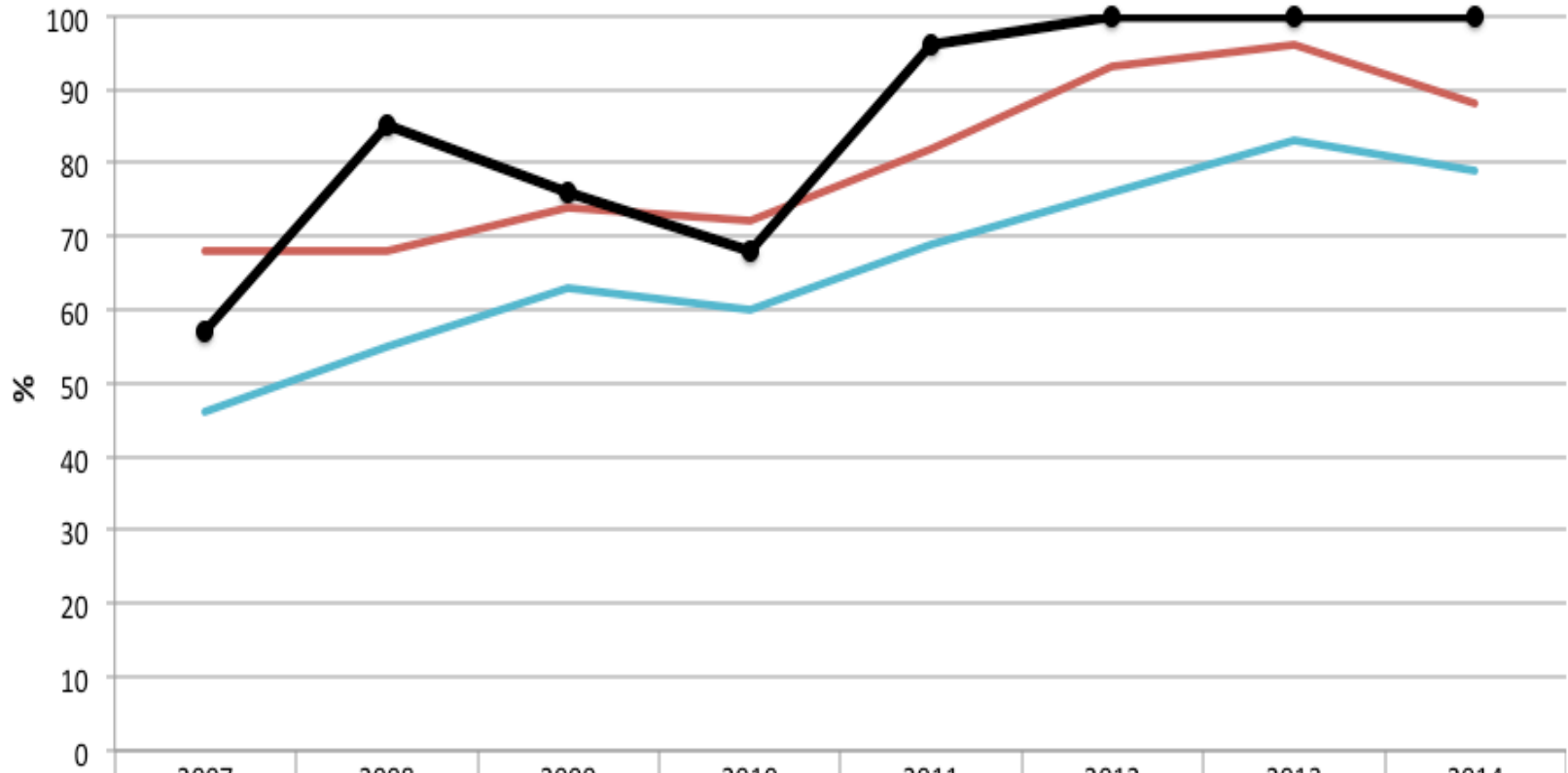
MCAS English Language Arts: % Proficient & Advanced Grade 10 African American/Black



	2007	2008	2009	2010	2011	2012	2013	2014
Bedford	84	70	NR	54	78	84	100	81
Belmont	90	NR	84	NR	100	100	100	85
Brookline	71	59	72	71	81	91	89	86
Concord-Carlisle	71	100	78	60	88	96	100	100
Lexington	57	85	76	68	96	100	100	100
Lincoln-Sudbury	53	75	85	90	79	96	100	92
Newton	56	67	68	63	74	93	92	84
Wellesley	67	67	NR	100	91	89	100	92
State	46	55	63	60	69	76	83	79

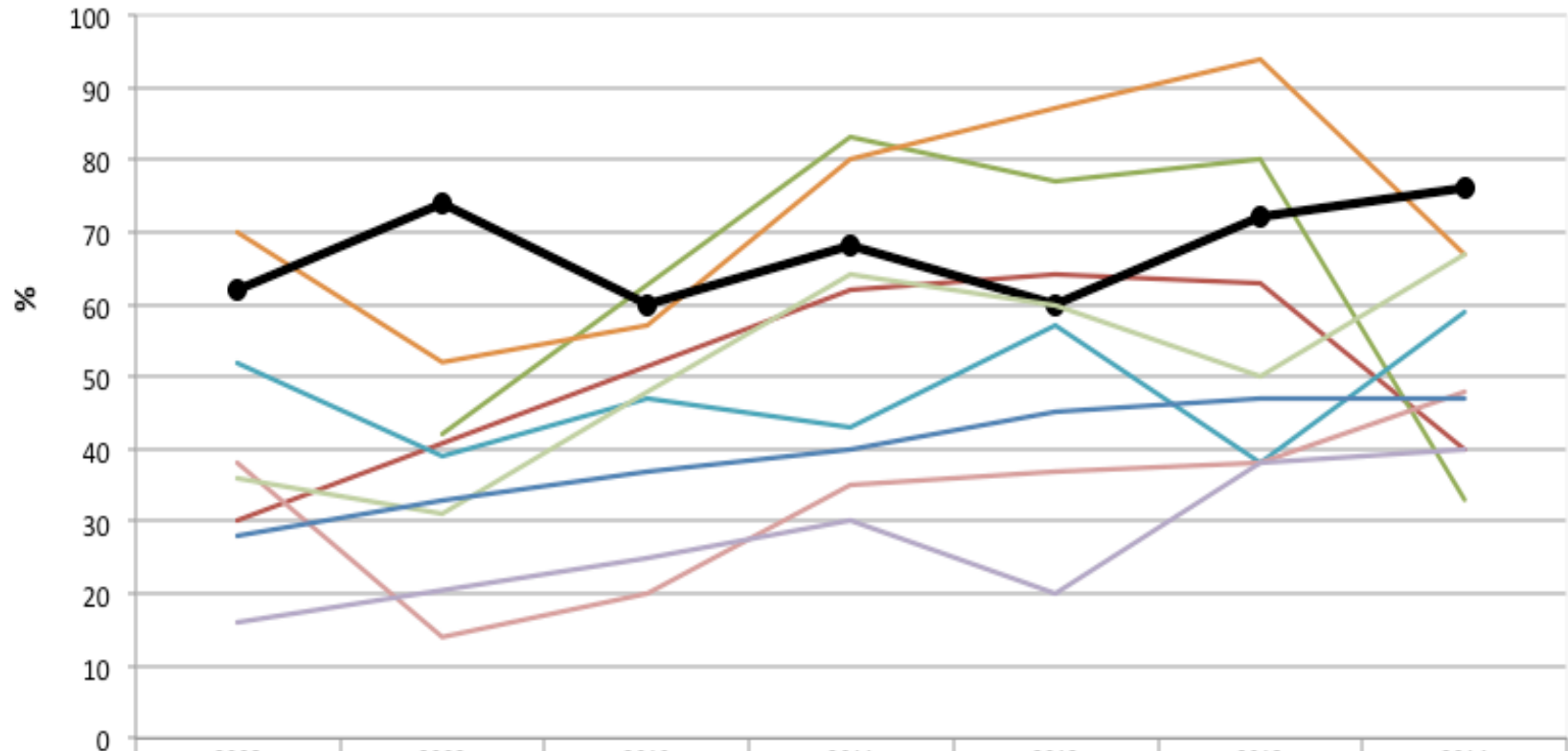
SOURCE: DESE Statewide reports

MCAS English Language Arts: % Proficient & Advanced Grade 10 African American/Black



	2007	2008	2009	2010	2011	2012	2013	2014
Similar Communities	68	68	74	72	82	93	96	88
Lexington	57	85	76	68	96	100	100	100
State	46	55	63	60	69	76	83	79

MCAS Science & Technology: % Proficient & Advanced Grade 10 African American/Black

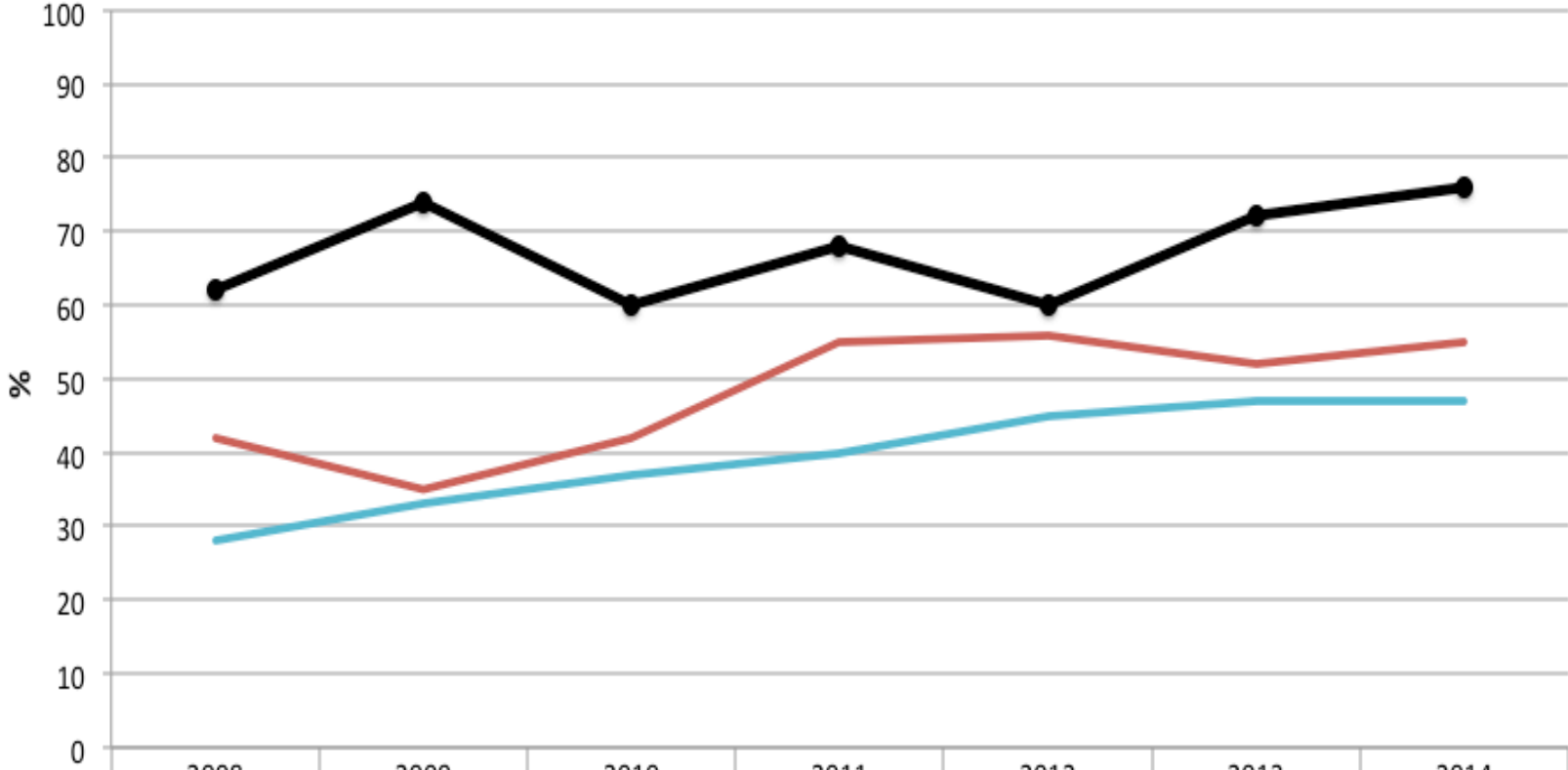


	2008	2009	2010	2011	2012	2013	2014
Bedford	30	NR	NR	62	64	63	40
Belmont	NR	42	NR	83	77	80	33
Brookline	52	39	47	43	57	38	59
Concord-Carlisle	70	52	57	80	87	94	67
Lexington	62	74	60	68	60	72	76
Lincoln-Sudbury	38	14	20	35	37	38	48
Newton	36	31	48	64	60	50	67
Wellesley	16	NR	25	30	20	38	40
State	28	33	37	40	45	47	47

SOURCE: DESE Statewide reports

*2007 Science & Technology grade 10 African American results for other communities are not publically available

MCAS Science & Technology: % Proficient & Advanced Grade 10 African American/Black

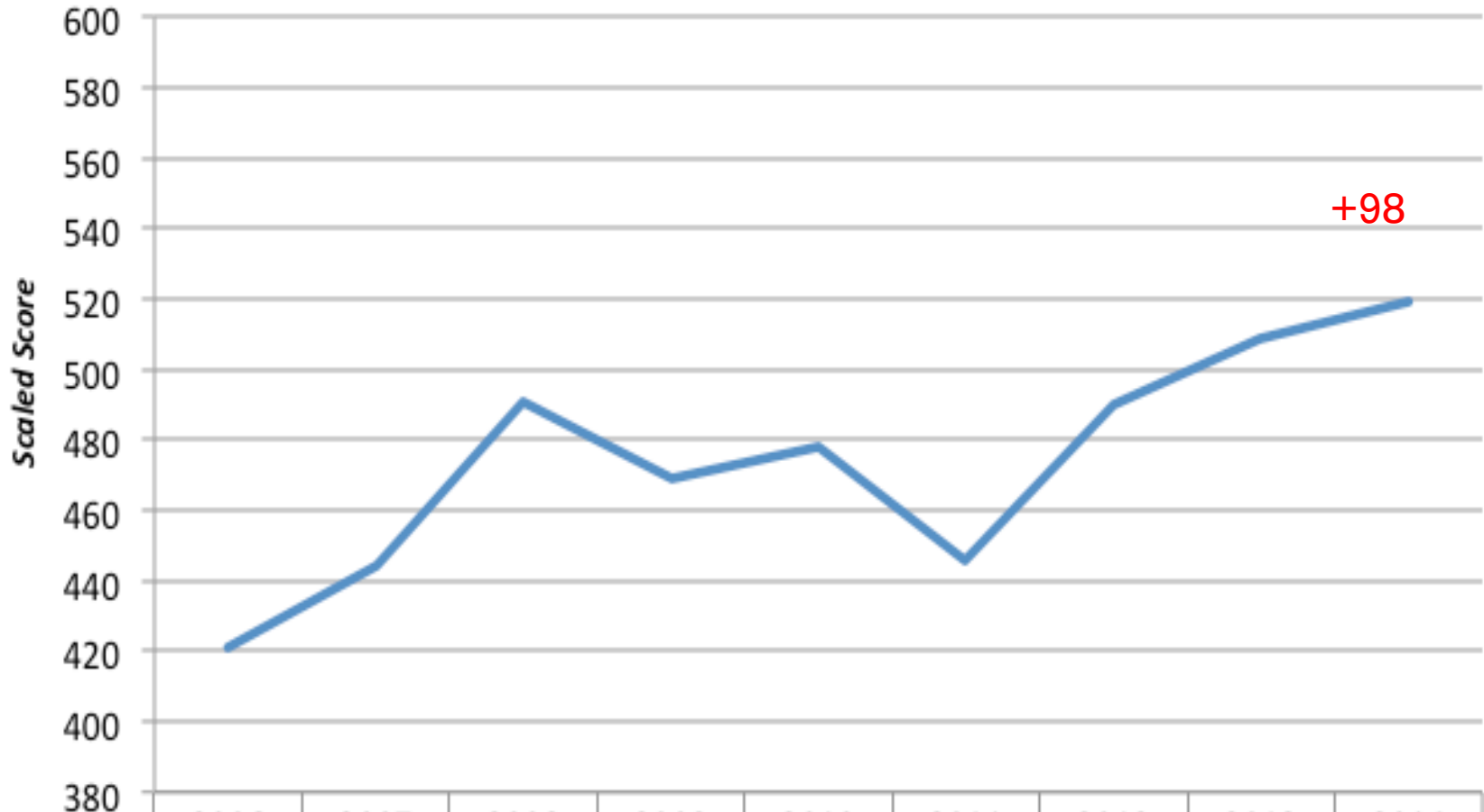


	2008	2009	2010	2011	2012	2013	2014
Similar Communities	42	35	42	55	56	52	55
Lexington	62	74	60	68	60	72	76
State	28	33	37	40	45	47	47

SOURCE: DESE Statewide reports

*2007 Science & Technology grade 10 African American results for other communities are not publically available

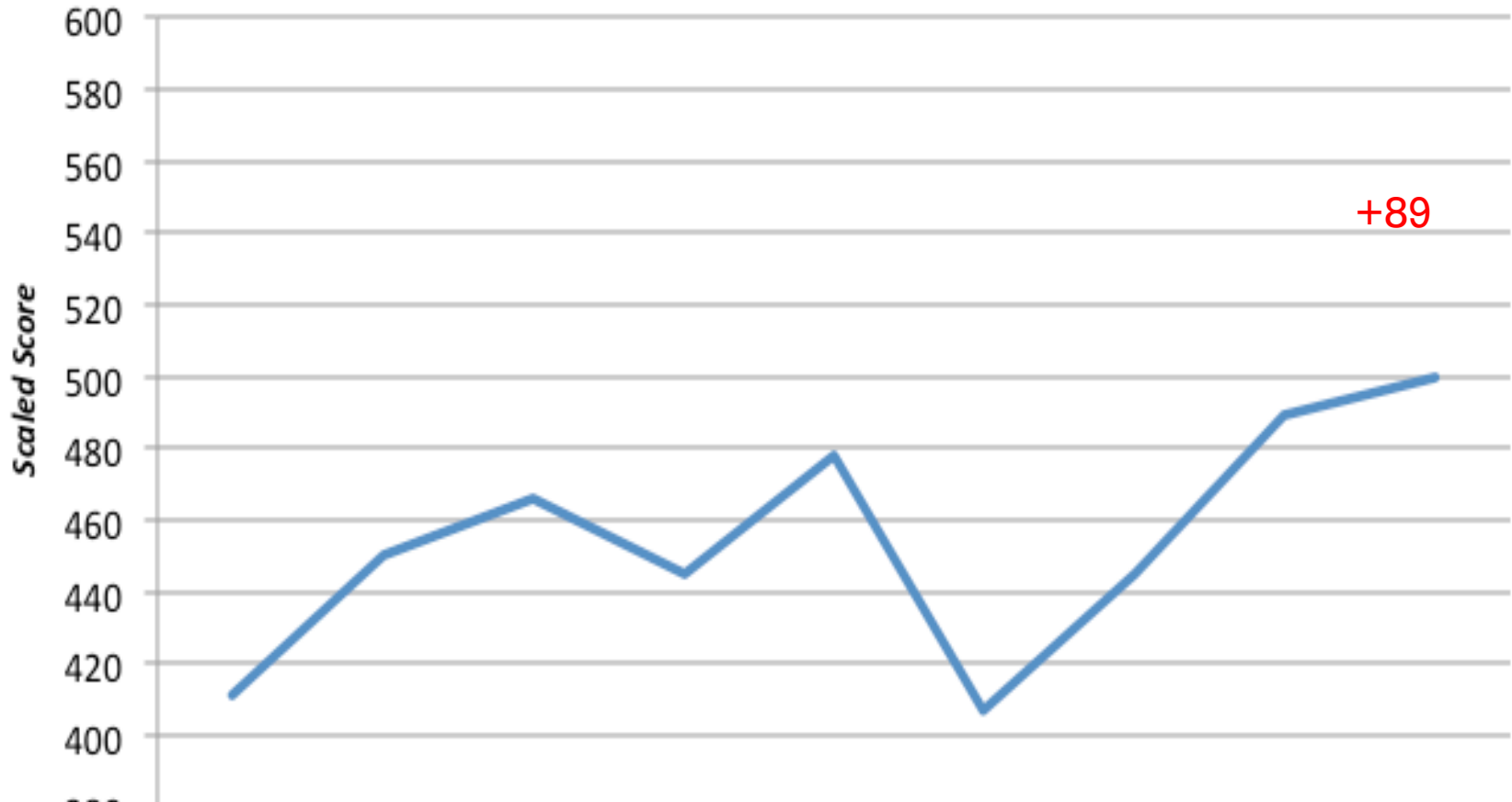
Average SAT Mathematics Score Black/African American Students



	2006	2007	2008	2009	2010	2011	2012	2013	2014
Mathematics	421	444	491	469	478	446	490	509	519
Percentile	46	56	73	65	69	57	73	78	81

SOURCE: College Board School Integrated Summary
 * Percentiles are approximated using 2014 data tables

Average SAT Reading Score Black/African American Students

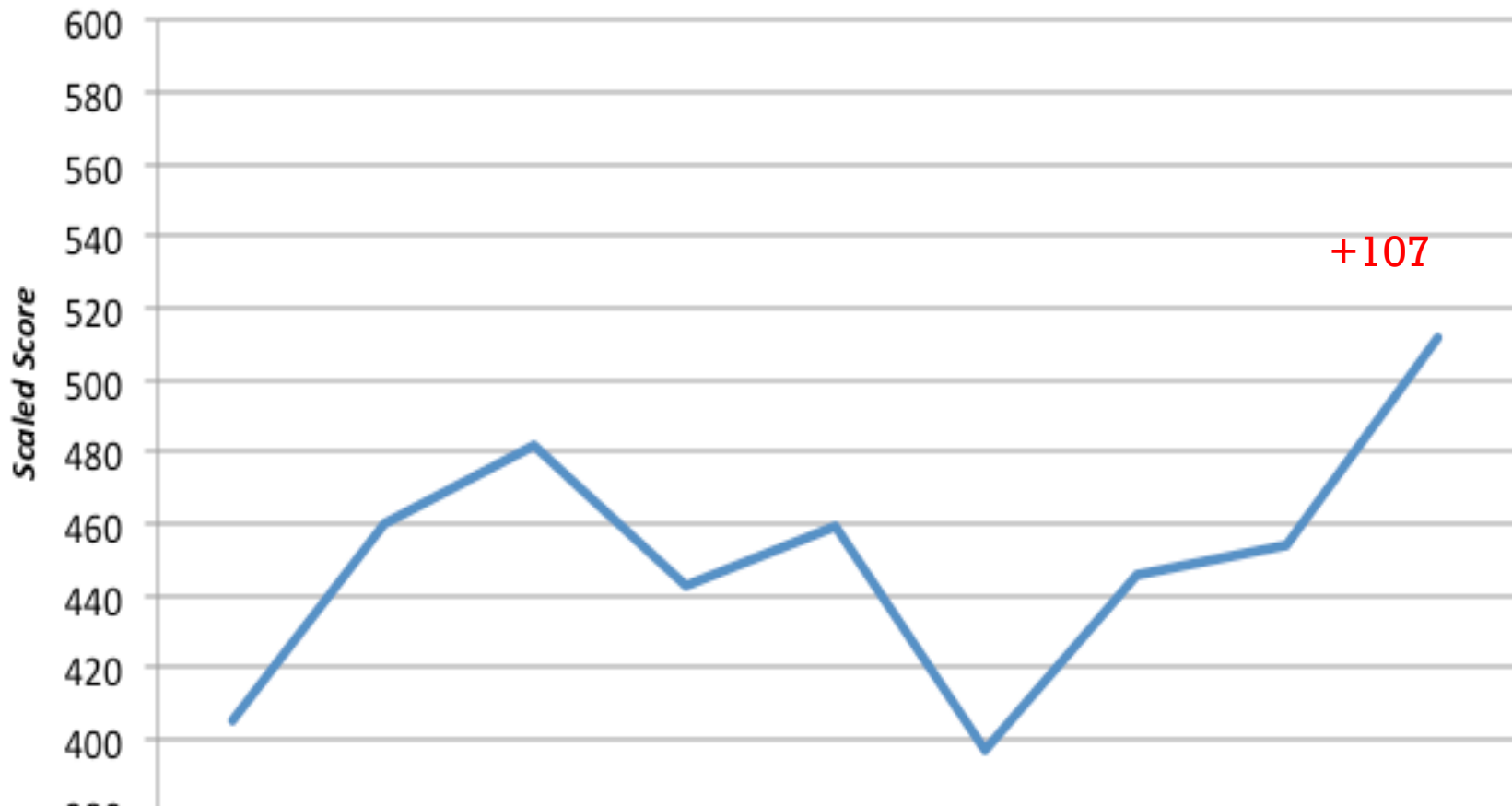


	2006	2007	2008	2009	2010	2011	2012	2013	2014
Reading	411	450	466	445	478	407	445	489	500

Percentile	42	58	64	56	69	40	56	73	75
------------	----	----	----	----	----	----	----	----	----

SOURCE: College Board School Integrated Summary
 * Percentiles are approximated using 2014 data tables

Average SAT Writing Score Black/African American Students



	2006	2007	2008	2009	2010	2011	2012	2013	2014
Writing	405	460	482	443	459	397	446	454	512

Percentile	45	68	75	62	68	42	63	66	83
------------	----	----	----	----	----	----	----	----	----

SOURCE: College Board School Integrated Summary
 * Percentiles are approximated using 2014 data tables